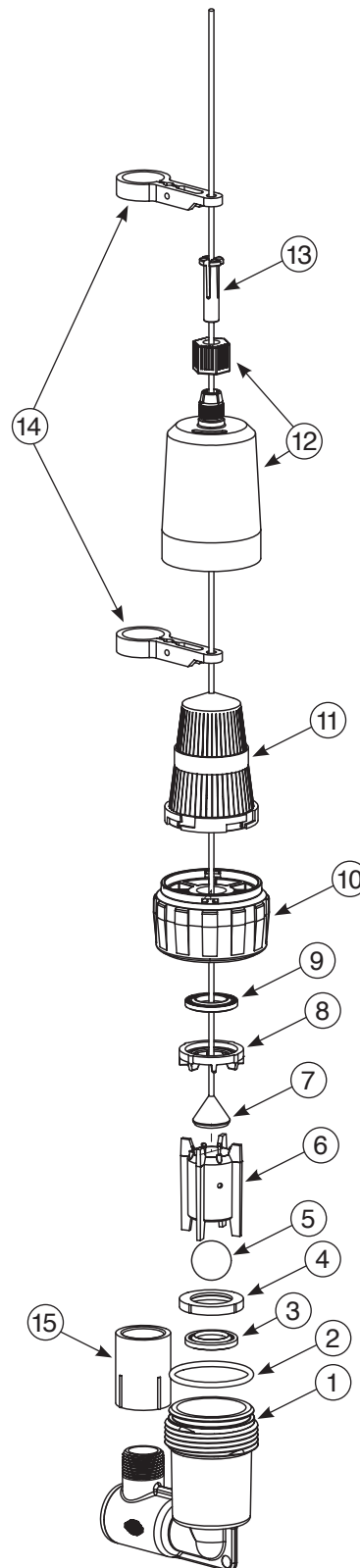
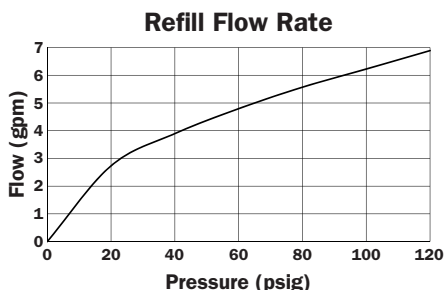
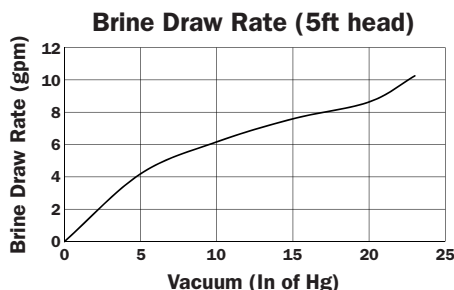


484 3/4" Commercial Brine Valve

484 3/4" COMMERCIAL BRINE VALVE FEATURES:

- Modular design eliminating the use of any screws in the valve body
- Easier to field service and clean
- Distributor cone is now a quarter turn bayonet lock and the top body cap is threaded
- Flow rates are 10 GPM draw and 5 GPM refill
- More robust interior design to help prevent pre-checking
- New float design that is simple to adjust with a Jaco nut style locking mechanism
- For use on time brine refill as well as constant pressure refill systems
- Maximum Operating Pressure: 125 psig (862 kPa)
- Temperature Range: 40-110°F (4-43°C)
- 36" and 54" Float Rods are available



ORDER INFORMATION:

Brine Valve with Socket Weld Coupling

H7070-484-36 - 484 3/4" Commercial Brine Valve (36" Rod)*

H7070-484-54 - 484 3/4" Commercial Brine Valve (54" Rod)*

Brine Valve with Threaded Coupling

H7070-484-36T - 484 3/4" Commercial Brine Valve (36" Rod)**

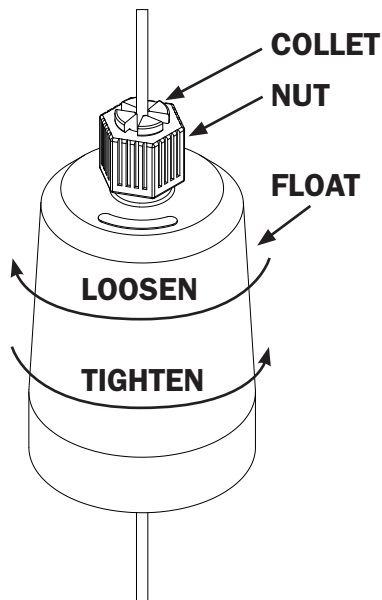
H7070-484-54T - 484 3/4" Commercial Brine Valve (54" Rod)**

ITEM NUMBER	ORDER NUMBER	DESCRIPTION	QTY.
1	H7070-40	Body, Threaded	1
2	V3641	225 O-Ring	1
3	H7070-03B	Seat Washer Bottom (Clear)	1
4	H7070-18	Lower Retainer	1
5	H7070-04HF	High Flow Air Check Ball	1
6	H7070-39	484 Cage, Long	1
7	H7070-08A	Brine Valve Cone	1
8	H7070-16	Upper Seal Retainer	1
9	H7070-03T	Seat Washer Top (Orange)	1
10	H7070-38	Cap, Threaded	1
11	H7070-26HF	Basket Diffuser	1
12	H4630	Float With Lock 96 Grams Natural	1
13	H7070-46	Float Collet	1
14	H7070-44	Float Rod Guide	2
15	H7070-45*	Coupling, Socket x FIPT Schedule 80 3/4"	1
	H7070-47**	Coupling, FxF Schedule 80 3/4"	1

484 3/4" Commercial Brine Valve Installation Guide

1. Use Teflon tape only on threaded plastic pipe connections. Many liquid or paste pipe sealing products contain compounds that may cause plastics to crack with time.
2. PVC brine pipe is recommended for use with these valves as it is non-corrosive and easily solvent welds to the female adapter.
3. After the proper float setting has been determined and the height set, place the float rod guides close to the float (but not as to hinder float operation), adjust to position the float directly above the brine valve and tighten securely.
4. Position the assembly securely in the brine well and check to see that there is no interference with the float operation.

NOTE: This brine valve is intended to be used as a safety float for timed brine systems at refill rates up to 5 gpm. A refill check ball is installed, so that non-timed refill systems are possible as well.



Float Adjustment:

1. Hold Collet and Nut stationary.
2. Turn the Float about a half turn clockwise to loosen.
3. Slide the Collet, Nut & Float to desired position on the Float Rod.
4. Hold Collet and Nut together and stationary while turning the float counter clockwise to tighten.

Order No: H7070-55

Description: 484 Brine Valve Seal Replacement Kit

ORDER NUMBER	DESCRIPTION
H7070-03T	Seat Washer Top (Orange)
H7070-03B	Seat Washer Bottom (Clear)
V3641	O-ring Cover Seal
H7070-16	Upper Seat Retainer
H7070-18	Lower Seat Retainer